

A close-up photograph of a woman's hands holding a bright orange ceramic mug. Steam is rising from the mug, suggesting a hot beverage. The woman is wearing a blue denim shirt over a light blue ribbed sweater. She has a gold ring on her left ring finger. The background is a soft-focus view of trees and a window, creating a warm and pleasant atmosphere.

**Duopa** 

carbidopa/levodopa  
enteral suspension  
4.63 mg/20 mg per mL

Not an  
actual patient.

## DAILY GUIDE FOR DUOPA

What you need to know to set up your routine

**DUO**   
**CONNECT**  
*complete*

Please see [Full Prescribing Information](#) or visit [www.duopa.com](http://www.duopa.com).

Please see Indication and [Important Safety Information](#) on pages 4 and 5.



# Welcome

---

You've come a long way since you decided to start Duopa (carbidopa/levodopa). And DuoConnect Complete will be with you every step of the way going forward. This guide can help you set up your daily routine as you get started and can be a great resource for later on. You'll find the information you'll need to use your pump. This includes step-by-step instructions, what to watch out for, and helpful tips. There's even a place for you to write down the addresses and phone numbers of your healthcare team and specialty pharmacy.

This guide is not intended to be a substitute for training and discussions with your healthcare provider. Be sure to discuss any medical concerns with your provider.

We hope this guide will be a valuable reference for you and your care partners as you incorporate Duopa into your daily routine.



Throughout this guide, you'll see messages with this symbol to help you find information you should pay special attention to.

---



**Support for  
every step of  
your treatment**

**Call 1-844-386-4968**

**Monday–Friday, 8:00 AM to 8:00 PM ET.**

After-hours and holiday calls will be returned within 1 hour. For urgent medical emergencies, call your healthcare provider or 911.

Please see [Full Prescribing Information](#) or visit [www.duopa.com](http://www.duopa.com).  
Please see [Indication and Important Safety Information](#) on pages 4 and 5.

**Duopa**   
carbidopa/levodopa  
enteral suspension  
4.63 mg/20 mg per mL

# Table of contents

---

<b>Welcome and introduction</b> .....	<b>2</b>
<b>Use and important safety information</b> .....	<b>4</b>
<b>How to reach your team</b> .....	<b>6</b>
<b>Stoma care</b> .....	<b>8</b>
<b>Your daily routine</b> .....	<b>14</b>
▪ Your Duopa pump and tubing .....	14
▪ Understanding your daily dose .....	15
▪ Morning procedure .....	16
▪ Extra dose .....	21
▪ Temporary disconnection of pump.....	22
▪ Reconnecting pump after temporary disconnection.....	24
▪ Evening procedure.....	26
▪ Changing the batteries .....	30
▪ Changing your cassette.....	32
<b>Tips for use</b> .....	<b>38</b>
▪ Making Duopa part of your day.....	40
▪ Traveling with Duopa.....	41
<b>Frequently asked questions</b> .....	<b>43</b>
▪ Cassette FAQs .....	43
▪ Pump FAQs .....	44
▪ Tubing FAQs.....	47
<b>Alarms and messages</b> .....	<b>48</b>

# Use and important safety information

## Use

DUOPA (carbidopa and levodopa) enteral suspension is a prescription medicine used for treatment of advanced Parkinson's disease. DUOPA contains two medicines: carbidopa and levodopa.

## Important Safety Information

What is the most important safety information I should know about DUOPA?

- **Stomach and intestine (gastrointestinal) problems and problems from the procedure you will need to have to receive DUOPA (gastrointestinal procedure-related problems) may occur.** Some of these problems may require surgery and may lead to death.
  - **Serious side effects** may include: a blockage of your stomach or intestines (bezoar); stopping movement through intestines (ileus); drainage, redness, swelling, pain, feeling of warmth around the small hole in your stomach wall (stoma); bleeding from stomach ulcers or your intestines; inflammation of your pancreas (pancreatitis); infection in your lungs (pneumonia); air or gas in your abdominal cavity; skin infection around the intestinal tube, pocket of infection (abscess), or infection in your blood (sepsis) or abdominal cavity may occur after surgery; stomach pain, nausea, or vomiting.
- Tell your healthcare provider right away if you have any of the following symptoms of stomach and intestine problems and gastrointestinal procedure-related problems: stomach (abdominal) pain; constipation that does not go away; nausea or vomiting; fever; blood in your stool; or a dark tarry stool.

Your healthcare provider will talk to you about the stoma procedure. **Before the stoma procedure**, tell your healthcare provider if you ever had a surgery or problems with your stomach.

**Talk to your healthcare provider about what you need to do to care for your stoma.** After the procedure, you and your healthcare provider will need to regularly check the stoma for any signs of infection.

**Do not take DUOPA if you** currently take or have recently taken (within 2 weeks) a medication for depression called a non-selective monoamine oxidase (MAO) inhibitor. Ask your healthcare provider or pharmacist if you are not sure if you take an MAO inhibitor.

**Tell your healthcare provider about all the medicines you take, including prescription and over-the-counter medicines, vitamins, and herbal supplements.** Using DUOPA with certain other medicines, including medications for high blood pressure, MAO inhibitors, antipsychotics, metoclopramide, isoniazid, and iron or vitamin supplements, may cause serious side effects. High-protein foods may affect how DUOPA works. Tell your healthcare provider if you change your diet.

**DUOPA may cause serious side effects. Talk to your doctor before starting DUOPA and while on DUOPA if you have had or have any of these:**

- **Falling asleep during normal daily activities without warning.** DUOPA may cause you to fall asleep while you are doing daily activities such as driving, which may result in an accident. This can happen as late as one year after starting DUOPA. **Do not** drive or operate machinery until you know how DUOPA affects you. Tell your healthcare provider if you take medicines that can make you sleepy, such as sleep medicines, antidepressants, or antipsychotics.

  
**Duopa**  
carbidopa/levodopa  
enteral suspension  
4.63 mg/20 mg per mL

Please see [Full Prescribing Information](#) or visit [www.duopa.com](http://www.duopa.com).  
Please see Indication and [Important Safety Information](#) continued on page 5.

  
DUO  
CONNECT  
complete



# Important safety information (continued)

---

- **Low blood pressure when you stand or sit up quickly.** After you have been sitting or lying down, stand up slowly to help reduce dizziness, nausea, sweating, or fainting until you know how DUOPA affects you.
- **Seeing, hearing, or feeling things that are not real** (hallucinations).
- **Unusual urges.** Some people taking medicines for Parkinson's disease, including DUOPA, have reported urges such as excessive gambling, compulsive eating, compulsive shopping, and increased sex drive.
- **Depression and suicide.** DUOPA can cause or worsen depression. Pay close attention to changes in your mood, behavior, thoughts, or feelings. Call your healthcare provider right away if you feel depressed or have thoughts of suicide.
- **Uncontrolled sudden movements** (dyskinesia). If you have new dyskinesia or your dyskinesia gets worse, tell your healthcare provider. This may be a sign that your dose of DUOPA or other Parkinson's medicines may need to be adjusted.
- **Progressive weakness or numbness or loss of sensation in the fingers or feet** (neuropathy).
- **Heart attack or other heart problems.** Tell your healthcare provider if you have experienced increased blood pressure, a fast or irregular heartbeat, or chest pain.
- **Abnormal blood tests.** DUOPA may cause changes in certain blood tests, especially certain hormone and kidney function blood tests.
- Worsening of the **increased pressure in your eyes** (glaucoma). The pressure in your eyes should be checked after starting DUOPA.

**Do not stop using DUOPA or change your dose unless you are told to do so by your healthcare provider. Tell your healthcare provider if you develop withdrawal symptoms such as fever, confusion, or severe muscle stiffness.**

**The most common side effects of DUOPA include:** complications of tubing placement procedure, swelling of legs and feet, nausea, high blood pressure (hypertension), depression, and mouth and throat pain.

**Please see the full [Prescribing Information](#) including [Medication Guide](#) for additional information about DUOPA. Talk to your healthcare provider if you have questions.**

You are encouraged to report negative side effects of prescription drugs to the FDA. Visit [www.fda.gov/medwatch](http://www.fda.gov/medwatch) or call 1-800-FDA-1088.

If you are having difficulty paying for your medicine, AbbVie may be able to help. Visit [AbbVie.com/myAbbVieAssist](http://AbbVie.com/myAbbVieAssist) to learn more.

## How to reach your team

Make it easy to reach your team. Write down their names, addresses and phone numbers here:

Your treatment team			
	Phone	Name	Address
PD Specialist/Neurologist			
Movement Disorder Specialist			
Proceduralist*			
Primary Care Provider (PCP)			
Nurse, Nurse Practitioner (NP), or Physician Assistant (PA)			
Specialty pharmacy	877-315-6140	Accredo	
	877-437-8469	CVS/Caremark	
	866-344-4874	Pharmacy Solutions	

PD=Parkinson's disease.

\*The specialist who will be performing your percutaneous endoscopic gastrostomy with jejunal tube (PEG-J) procedure.



## How to reach your team (continued)

### DuoConnect Complete support system

	Phone	Name	Address
My Nurse Ambassador			
After-hours Nurse Line	1-844-386-4968		
Peer Mentor Program	1-855-776-8966		
Reimbursement Specialist	1-844-386-4968		

# Stoma care

---

**Below is general guidance on caring for your stoma, but remember to always follow your proceduralist's instructions. Reach out to your care team if you have any questions.**



## What is a stoma?

A stoma is a small hole in your stomach wall that is used to place a percutaneous endoscopic gastrostomy with jejunal tube, or PEG-J tube, into your small intestine.

- This procedure allows Duopa to flow from a cassette in your pump, through the PEG-J tube in your intestine and into your body
- Your proceduralist should give you specific instructions on caring for your stoma
- This guide has important information on stoma care—but reach out to your treatment team if you have any questions



## The first 24 to 72 hours

Change your dressing according to your proceduralist's instructions. Be sure to tell them if you have pain or bleeding.

As soon as your care team decides you're ready, you can begin treatment with Duopa.

The AbbVie PEG-J Tube should remain under moderate tension for 24 to 72 hours; follow up with your doctor for guidance.

- Avoid in/out movement of the PEG-J tube for the first 72 hours
- Do not rotate the tubing
- Do not use petroleum-based ointments, which may cause the fixation plate to slip



# Stoma care (continued)

---



## When you can shower or bathe

Ask your proceduralist when you can shower after your procedure, and be sure to follow their instructions for stoma care.

Never let your pump get wet—always disconnect the pump before you get in the water and reconnect when you're done.

- See [pages 22-25](#) for details on how to disconnect and reconnect your pump
- Dry your stoma thoroughly and carefully after showering or bathing
- If you stop Duopa for less than 2 hours, you do not need to take carbidopa/levodopa pills, but your healthcare provider may tell you to take an extra dose of Duopa
- If you need to stop Duopa for more than 2 hours during the day, please contact your healthcare provider and take your carbidopa/levodopa pills as prescribed



## Stoma care tips

- Keep your stoma clean and dry. Once fully healed, use mild soap and water to cleanse your stoma daily
- Don't use products that contain alcohol, iodine or petroleum
- Don't twist the tube
- Tell your proceduralist if the plate outside your body that holds the tube in place seems too loose or too tight
- Tell your proceduralist right away if you have pain, redness, or drainage, which may be signs of infection



**Have questions?** Call your proceduralist about your stoma. Or, call your Nurse Ambassador\* if you have additional questions about your tubing.

---

\*Nurse Ambassadors are provided by AbbVie and do not work under the direction of your health care professional (HCP) or give medical advice. They are trained to direct patients to their HCP for treatment-related advice, including further referrals.

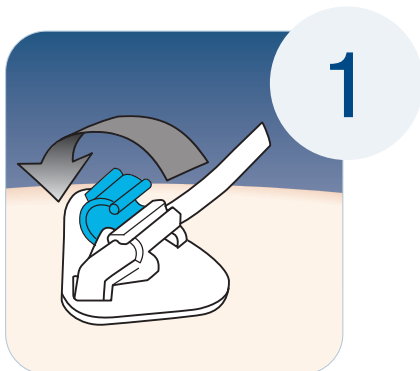
**Duopa**  
carbidopa/levodopa  
enteral suspension  
4.63 mg/20 mg per mL

Please see [Full Prescribing Information](#) or visit [www.duopa.com](http://www.duopa.com).  
Please see Indication and [Important Safety Information](#) on pages 4 and 5.

**DUO**  
CONNECT  
*complete*

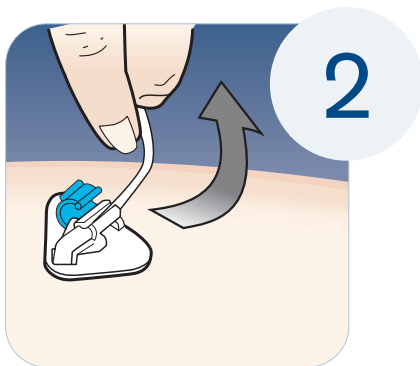
# The first week

It's a new routine—but you'll get used to it. **Below is general guidance on caring for your stoma, but remember to always follow your proceduralist's instructions.**



## Prepare

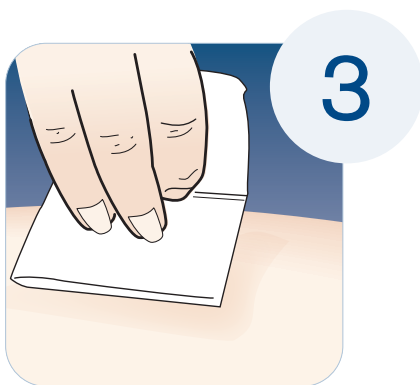
Wash your hands and place everything you need on a clean surface. Now open your dressing packs. With clean hands, remove and throw away the existing dressing.



## Release tubing

After the first 24-72 hours, open the tube clip and loosen the fixation plate.

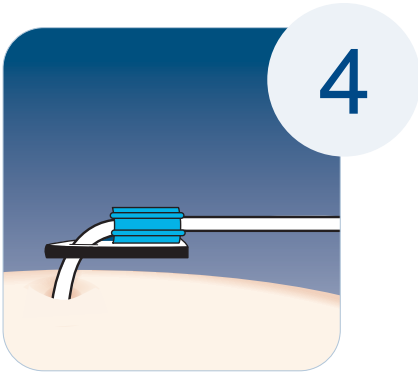
If unsure about timing, please reach out to your care team.



## Clean and dry the stoma

Inspect, clean, and dry the stoma completely according to your proceduralist's instructions. Don't use ointments with polyidone or iodine, which can damage the stomach tube.





## Replace the dressing

Once the stoma area is clean and dry, replace the fixation plate, allowing  $\frac{1}{5}$  inch to  $\frac{1}{3}$  inch (0.5 to 1 cm) between the plate and the skin of your stomach.

Then place a new, sterile dressing over (not under) the fixation plate. Secure the dressing per your healthcare provider's instructions.

## Move the PEG-J tube daily, as directed by your healthcare provider

Avoid in/out movement of the PEG-J tube for 72 hours after the procedure. The skin around the stoma will heal over time, but the stoma will stay open to allow the tube to pass through it.

When instructed by your doctor, move your PEG-J tube every time you change your dressing:

- Open the fixation plate and release the tubing
- Carefully push the tube  $1\frac{1}{4}$  to  $1\frac{1}{2}$  inches (3 cm to 4 cm) into the stoma, moving it back and forth (don't turn or rotate)
- Pull gently until you feel resistance from the internal plate
- Replace the fixation plate, allowing  $\frac{1}{5}$  to  $\frac{1}{3}$  inch (0.5 cm to 1 cm) between the plate and the skin of your stomach



**Do not twist the PEG-J tube.**



**Your stoma and tubing may be different based on your proceduralist. Please talk to your proceduralist if you have any questions.**

## Flushing the tube

Follow the instructions below when you flush out your tube every day. Failure to adequately flush the tube may result in occlusion or blockage.

---

- Fill a syringe with 10 mL of room-temperature tap or drinking water. Take the white cap off the green connector. Twist the syringe connector into the straight green connector. Now twist the syringe into the syringe connector. Flush using firm and steady pressure. Refill the same syringe with 10 mL of water and repeat flush. Replace the white cap on the straight green connector
- Refill the same syringe with 10 mL of water. Take the white cap off the blue, white or violet angled connector. Twist the syringe connector into the angled connector; then twist the syringe into the syringe connector. Flush using firm and steady pressure. Refill the same syringe with 10 mL of water and repeat flush. Replace the white cap on the angled connector
- Never force the syringe if flushing is difficult. If you need help, call your doctor
- Don't overtighten the syringe connector or the caps, as they could break. Never use a broken syringe connector
- For more information, see the Patient Instructions for Use that was sent to you



**To see what some of these components look like, please see the diagram on [page 14](#).**

---



**Hot water could burn the wall of your stomach or intestine—only use room temperature.**

---



**When you are finished, dispose of the syringe in your household trash bin.**

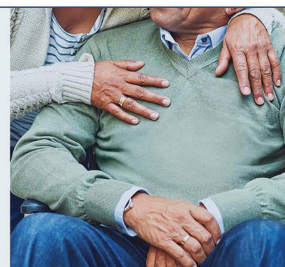
---



For more information about how to take care of your stoma and tubing, please see *What's next? Caring for your stoma and tubing after your PEG-J procedure*, provided to you by your Nurse Ambassador.

## What's next? Caring for your stoma and tubing after your PEG-J procedure.

Here is important information for care after your percutaneous endoscopic gastrostomy with jejunal tube (PEG-J) procedure. Be sure to follow any additional instructions given to you by your doctor, and reach out if you have any questions.



### When should I call my doctor?

- Use this guide as a recommendation, but always follow up with your doctor if you have questions, concerns, or to confirm instructions
- Talk to your doctor if you experience pain, discomfort, and tenderness in the stomach area or discharge from the stoma, as well as any:
  - **Symptoms of stoma infection**  
This may include drainage, redness, swelling, pain, or a feeling of warmth around your stoma
  - **Symptoms of stomach and intestinal problems**  
This may include stomach pain; constipation that does not go away; nausea or vomiting; fever; blood in your stool; or a dark tarry stool



Don't wait: Call your doctor if you're in pain.

To make it easier, you can note important contacts here:

Name: \_\_\_\_\_ Phone: \_\_\_\_\_

Name: \_\_\_\_\_ Phone: \_\_\_\_\_

### How do I care for my stoma for the first 24-72 hours after I get home?

- Change your dressing **according to your doctor's instructions**
  - If you did not get instructions, please follow up with your doctor
  - Be sure to tell them if you have any pain, bleeding, or signs of infection
  - Ask your doctor how to place your dressing and how often to change it
  - The triangular external fixation device should be left in place under moderate tension for 24-72 hours after your procedure; follow up with your doctor for guidance
  - Avoid in/out movement of the PEG tube for 72 hours after the procedure
  - Don't rotate the tubing
  - Don't use petroleum-based ointments, which may cause the external plate to slip



Always wash your hands before stoma and tubing care.

Write down the date to change your first dressing here: \_\_\_\_\_



Please see [Full Prescribing Information](#) or visit [www.duopa.com](http://www.duopa.com).  
Please see Indication and [Important Safety Information](#) on back page.

**Duopa**  
carbidopa/levodopa  
enteral suspension  
4.63 mg/20 mg per mL

**Duopa**  
carbidopa/levodopa  
enteral suspension  
4.63 mg/20 mg per mL

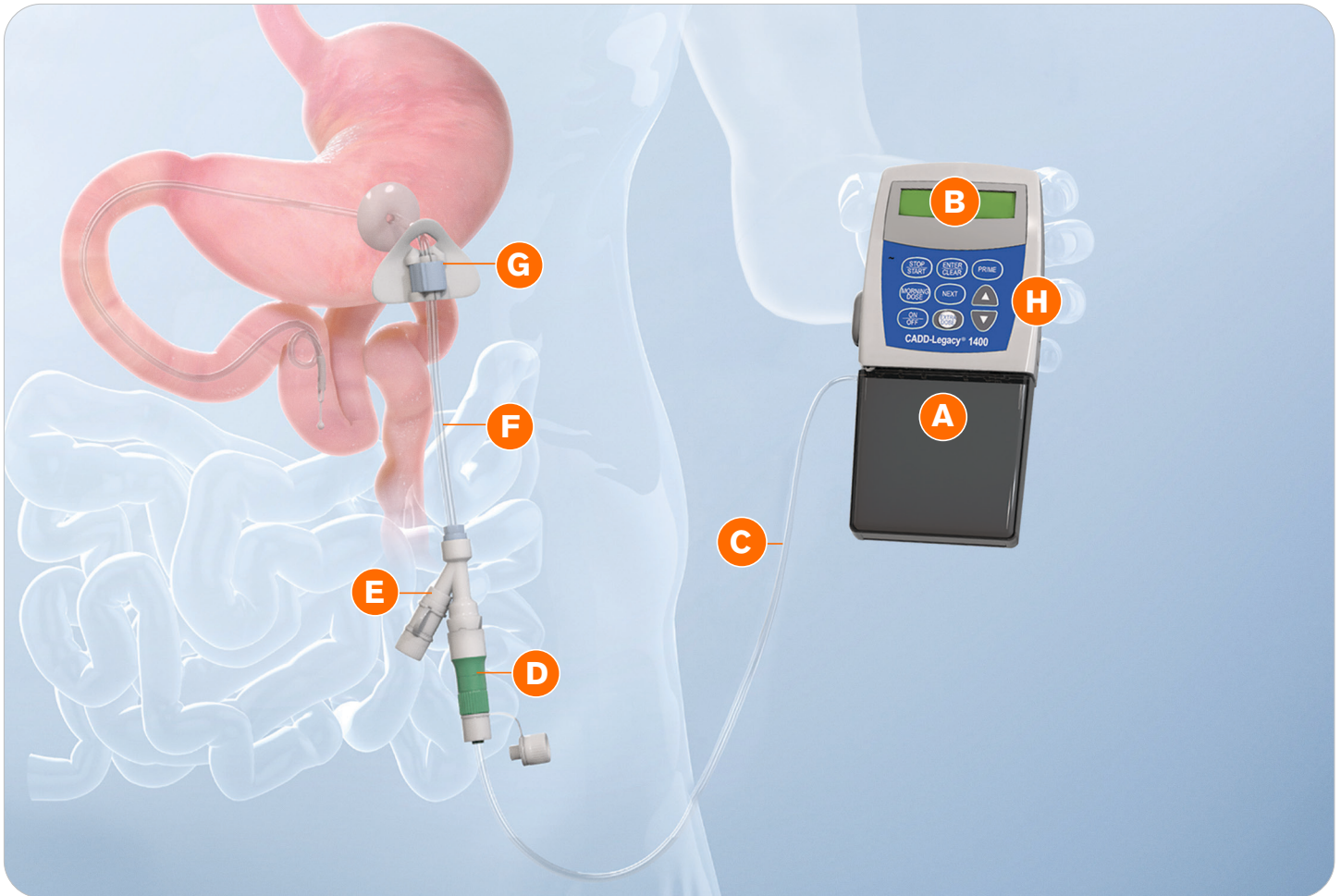
Please see [Full Prescribing Information](#) or visit [www.duopa.com](http://www.duopa.com).  
Please see Indication and [Important Safety Information](#) on pages 4 and 5.



# Your daily routine

## Your Duopa pump and tubing

Here's what your pump, tubing, and other components look like. If any of your components do not look like these, please contact your proceduralist.



Review the Instructions for Use and Medication Guide that accompany this brochure.

- A** Duopa cassette
- B** Pump
- C** Duopa cassette tube
- D** Straight green connector
- E** Angled connector, which may be blue, white or violet
- F** Stomach tube
- G** Stoma site
- H** Duopa cassette latch

**Duopa**  
carbido**pa**/levodopa  
enteral suspension  
4.63 mg/20 mg per mL

Please see [Full Prescribing Information](#) or visit [www.duopa.com](http://www.duopa.com).  
Please see Indication and [Important Safety Information](#) on pages 4 and 5.

**DUO**  
**CONNECT**  
*complete*

## Understanding your daily dose

Duopa is delivered in doses set by your healthcare provider. They will program your pump to deliver specific dosage amounts. Please don't attempt to change the settings on your pump unless instructed to do so by your healthcare provider.

Each day, you'll have a Morning Dose, a Continuous Dose, and the option for Extra Doses. Your healthcare provider will decide whether you need Extra Doses.



### Morning Dose

This first dose takes about 10 to 30 minutes to be delivered. The display on your pump will read "MORNING DOSE" as it delivers this dose.



### Continuous Dose

This dose will start automatically after the Morning Dose and is given continuously over 16 hours. The display on your pump will read **RUN** while delivering the Continuous Dose.



### Extra Dose

Duopa has an Extra Dose function that can be used to manage "off" symptoms that are not controlled by your Morning and Continuous doses. The display on your pump will read **DOSE** while this is active.

Tell your healthcare provider how often you need to use the Extra Dose. He or she may need to change your Continuous Dose.

# Morning procedure

Wash your hands thoroughly before you begin. Remember, if you have any questions, you can always call your Nurse Ambassador at 1-844-386-4968 or your healthcare provider.



1

## Take the Duopa carton containing the Duopa cassettes out of the refrigerator

Check the expiration date and the use by date.

Make sure the cassette is **not expired, damaged or empty**.

Take a Duopa cassette out of the carton.

Return the carton with the remaining cassettes to the refrigerator. **Let the Duopa cassette sit at room temperature for 20 minutes before using.** Each Duopa cassette may be used for up to 16 hours after it's removed from the refrigerator.



**Use only Duopa cassettes to make sure the pump works correctly.**



2

## Remove the cassette clip

Remove the cassette tube from its slot in the clip.

Pull the clip from the cassette to slide it off.



3

## Attach the Duopa cassette to the pump

Hold the pump so the control buttons are facing you.

Hold the Duopa cassette so the tube points down.

Insert the Duopa cassette hooks into the hinge pins.

hinge pins  
cassette hooks



## Morning procedure (continued)



4

### Latch the Duopa cassette into the pump

Hold the pump and cassette upright against a flat surface.

Press down on the pump until the cassette fits tightly against the pump.

Use a coin, like a quarter, to twist the latch counterclockwise until the latch lines up straight with the arrow.



**A detached or incorrectly attached cassette could cause a problem with getting your Duopa.**

---



5

### Twist off the red cap on the end of the cassette tube

Save the red cap for use when you throw away the cassette.



**Be aware: connecting the red cap to the stomach tube will block Duopa flow.**

---



6

### Connect the stomach tube to the cassette tube

While holding the stomach tube steady, twist off the white cap on the end of the straight green connector.

Connect the cassette tube to the end of the straight green connector.



- **Be careful not to twist the cassette tube**
  - **Do not connect cassette tube to the angled connector, which may be blue, white or violet**
-

## Morning procedure (continued)



### Turn the pump on

Press and hold **ON/OFF** until the display turns on.

Wait approximately **30 seconds** for the pump to review settings.

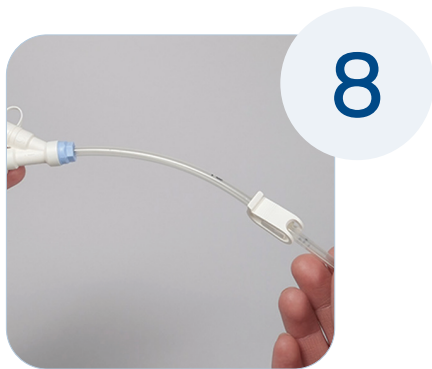
Check for **STOPPED** on the screen.



#### **Pump status: STOPPED**

The pump is now on but not yet delivering Duopa.

---



### Inspect the tubing for kinks or closed clamps

Straighten kinks (if needed) or open clamp.

## Morning procedure (continued)



### Start the pump

Press and hold **START/STOP** until 3 dashes appear and then disappear from the screen.

Wait approximately **15 seconds** for the pump to start.

Check for **RUN** on the display to make sure it's on.

#### Pump status: RUN

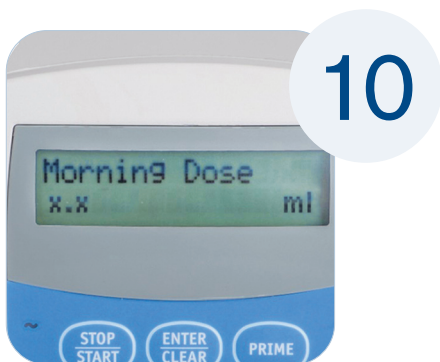


Your pump is now running and ready to deliver Duopa.

If you see a message other than **RUN**, check the Alarms and Messages section on [pages 48-49](#) to troubleshoot.



To start your Morning Dose, you will need to press the **MORNING DOSE** key twice. Please follow steps 10 and 11 to begin your Morning Dose.



### The first key press shows the morning dose on the display

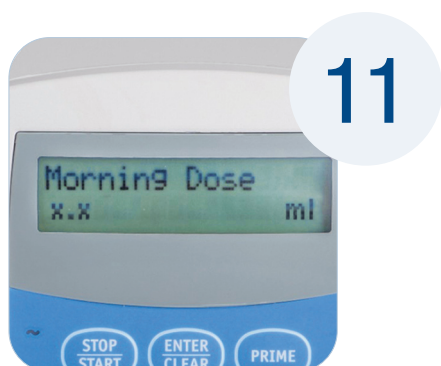
Press **MORNING DOSE**.

Check for **MORNING DOSE** on the display.

The number on your display is the Morning Dose that your healthcare provider prescribed for you.

The pump status lets you know what your pump is doing based on the message it displays.

## Morning procedure (continued)



### The second key press starts morning dose delivery

Press **MORNING DOSE** a second time to deliver the Morning Dose. The display **MORNING DOSE** shows a countdown of your Morning Dose.

It will take about 10 to 30 minutes to deliver your Morning Dose.

#### Pump status: MORNING DOSE



Your pump will automatically switch to delivering Duopa at the Continuous Rate once your Morning Dose is complete. The display will change to **RUN**.



### Put the pump into the carrying case

Make sure the pump is in correct position.



If you are unable to deliver your Morning Dose, it may be too soon to deliver another dose. You may need to wait. The time between doses is decided by your healthcare provider.



## Extra dose



### To deliver an extra dose of Duopa

Check for **RUN** on the display.

Press **EXTRA DOSE** button.

Listen for 2 beeps.

The display will show **DOSE**.



#### Pump status: DOSE

Your pump is delivering the Extra Dose. When it finishes, it will automatically begin delivering the Continuous Rate, and the display will update to **RUN**.



If you are unable to deliver the Extra Dose, it may be too soon to deliver another. You may need to wait longer. Both the time between Extra Doses and the amount of Duopa it delivers are decided by your healthcare provider.

For instructions on changing the Duopa cassette, see [pages 32-37](#).

 The pump status lets you know what your pump is doing based on the message it displays.

**Duopa**  
carbidopa/levodopa  
enteral suspension  
4.63 mg/20 mg per mL

Please see [Full Prescribing Information](#) or visit [www.duopa.com](http://www.duopa.com).  
Please see Indication and [Important Safety Information](#) on pages 4 and 5.

**Duo**  
CONNECT  
*complete*

# Temporary disconnection of pump

If you need to disconnect the pump temporarily, follow these steps:



## Remove the pump from the carrying case



## Stop the continuous rate

Press and hold **STOP/START** until 3 dashes appear and then disappear from the display.

Check for **STOPPED** on the display.



## Turn the pump off

Press and hold **ON/OFF** until 3 sets of dots appear and then disappear from the display, and it goes blank.

Check that the display is off.

## Temporary disconnection of pump (continued)



### Clamp the cassette tube



### Disconnect the tubing

Twist the cassette tube to disconnect it from the straight green connector.

Replace the red cap on the cassette tube.



**Be careful not to twist the stomach tube.**

---



If you have additional questions about tube placement, flushing the tube, or securing the tubing after you disconnect your pump, ask your healthcare provider.

Instructions for reconnecting the pump are on the next pages.

---

# Reconnecting pump after temporary disconnection



1

## Remove the red cap on the end of the cassette tube

Save the red cap for use when you throw away the cassette.



**Don't put the red cap on the stomach tube—it will block Duopa flow.**



2

## Connect the stomach tube to the cassette tube

While holding the stomach tube steady, twist off the white cap on the end of the straight green connector.

Connect the cassette tube to the end of the straight green connector.



**Be careful not to twist the stomach tube.**



**Make sure not to connect the cassette tube to the angled connector.**



3

## Turn the pump on

Press and hold **ON/OFF** until the display turns on.

Wait approximately **30 seconds** for the pump to review settings.

Check for **STOPPED** on the screen



**Pump status: STOPPED**

The pump is now on but not yet delivering Duopa.



## Reconnecting pump after temporary disconnection (continued)



4

### Inspect the tubing for kinks or closed clamps

Straighten kinks if needed or open clamp.



5

### Start the pump

Press and hold **START/STOP** until 3 dashes appear and then disappear from the screen.

Wait approximately **15 seconds** for the pump to start running.

Check for **RUN** on the display.

#### Pump status: RUN



Your pump is now delivering Duopa as programmed. If you see a different message on the display, please refer to the Alarms and Messages section on [pages 48-49](#) to troubleshoot.



6

### Put the pump into the carrying case

Make sure the pump is in correct position.



If you stop Duopa for less than 2 hours, you do not need to take carbidopa/levodopa pills, but your healthcare provider may tell you to take an extra dose of Duopa prior to disconnecting.

If you need to stop Duopa for more than 2 hours during the day, please contact your healthcare provider, and take your carbidopa/levodopa pills as prescribed.

 **The pump status lets you know what your pump is doing based on the message it displays.**

# Evening procedure

For the evening procedure, you will need:

- 1 syringe
- 1 syringe connector or adapter
- Room-temperature water
- 1 quarter



1

## Remove the pump from the carrying case



2

## Stop the continuous rate

Press and hold **STOP/START** until 3 dashes appear and then disappear from the display.

Check for **STOPPED** on the display.



3

## Turn the pump off

Press and hold **ON/OFF** until 3 sets of dots appear and then disappear from the display, and it goes blank.

Check that the display is off.

## Evening procedure (continued)



### Clamp the cassette tube



### Disconnect the tubing

Twist the cassette tube to disconnect it from the straight green connector.

Replace the red cap on the cassette tube.



**Make sure not to twist the stomach tube.**

## Evening procedure (continued)



6

### Flush the straight green connector

Fill a syringe with 10 mL of room-temperature tap or drinking water. Take the white cap off the green connector. Then, twist the syringe connector into the straight green connector. Now twist the syringe into the syringe connector. Flush using firm and steady pressure.



**Do not use hot water, as it could burn the wall of your stomach or intestine.**



**Do not force the syringe if flushing the tube is difficult. Call your healthcare provider if you are unable to flush or have difficulty flushing your tube.**

Refill the same syringe with 10 mL of water and repeat flush. Replace the white cap on the straight green connector.

Remove the syringe and the syringe connector or adapter.



**The first time you flush the tubing after starting Duopa, you may notice it takes more pressure to flush, as the medication is a suspension.**

## Evening procedure (continued)



7

### Flush the angled connector

Twist the cap off the angled connector. Your angled connector may be white, blue or violet.

Refill the same syringe with 10 mL of water. Next, take the white cap off of the blue, white or violet angled connector. Twist the syringe connector into the angled connector; then twist the syringe into the syringe connector. Flush using firm and steady pressure.



**Do not use hot water, as it could burn the wall of your stomach or intestine.**

Refill the same syringe with 10 mL of water and repeat flush. Replace the white cap on the angled connector.

#### Do not:



- Force the syringe if flushing the tube is difficult
- Overtighten the syringe connector, as it could break
- Use a broken syringe connector

Call your healthcare provider if you have difficulty flushing your tube.



8

### Remove the Duopa cassette from the pump

Hold the pump and Duopa cassette upright against a flat surface. Use a quarter to twist the latch clockwise until the latch pops out. Remove the Duopa cassette from the pump.

You have the option to put the cover back on the pump. If you choose to do so, use your quarter and twist the latch counterclockwise to secure it.

Discard your cassette, syringe and adapter in a safe place.

Do not reuse the medication that is left over.

If you have additional questions about securing the tubing after you disconnect your pump, ask your healthcare provider.



## Changing the batteries

Change the batteries once a week or if you see **LOWBAT** or **BATTERY DEPLETED** on the display. Use 2 new AA alkaline batteries, such as Duracell® CopperTop or Energizer® Max.

The pump keeps all the important information when the batteries are removed. However, Duopa will not be delivered if power is lost for any of the following reasons:

- The batteries are dead
- The batteries are not correctly secured or connected. Do not use the pump if the battery door or tabs are damaged or batteries are otherwise not secured in your pump
- There is a gap between the battery door and the pump housing or the door is otherwise not correctly latched. This could lead to the batteries not being correctly secured

### Caution:

- Do not use rechargeable nickel-cadmium (NiCd), nickel-metal hydride (NiMH) or carbon-zinc (heavy-duty) batteries. They do not provide enough power for the pump to operate correctly
- Do not store the pump for prolonged periods of time with the batteries installed. Battery leakage could damage the pump
- The life of the batteries is dependent on the amount of medication delivered, delivery rate, battery age and the temperature. The power of batteries will be quickly depleted at temperatures below 50°F (10°C)



### Ensure the pump is stopped



### Push and hold the arrow button while sliding the battery door until it comes completely off the pump

**TIP:** Use a silicone jar opener or similar gripper to slide the battery door open.

## Changing the batteries (continued)



3

### Remove the used batteries



4

### Install new batteries into the battery compartment

**NOTE:** Insert the batteries correctly based on the picture in the battery compartment. If you insert the batteries backwards, the display will remain blank. Reinsert the batteries, making sure to match the + and - markings with the battery compartment picture.



5

### Listen for a beep

#### Pump status: POWERING UP

Your pump will go through an electronic self-test during power-up. At the end of this sequence, the pump will beep 6 times. All of the display indicators, the software revision, and each setting will appear briefly.



If you don't hear a beep and the display is off, the pump is not powered. Check that the batteries are correctly inserted.



6

### Slide the battery door back onto the pump into its original closed position

 The pump status lets you know what your pump is doing based on the message it displays.

# Changing your cassette

If your healthcare provider has advised you to use more than one cassette a day, use the following procedure:



1

## Take the Duopa carton containing the Duopa cassette out of the refrigerator

Check the expiration and use by dates on the carton. If the carton isn't expired, take one Duopa cassette out and return the carton to the refrigerator.

Let the Duopa cassettes sit at room temperature for 20 minutes before using.



- Duopa cassettes may be used for up to 16 hours after removal from the refrigerator
- Use only Duopa cassettes to make sure the pump works correctly
- Do not use the cassette if the expiration date has passed or the cassette is damaged or empty



2

## Remove the pump from the carrying case



3

## Stop the continuous rate

Press and hold **STOP/START** until 3 dashes appear and then disappear from the display.

Check for **STOPPED** on the display.

## Changing your cassette (continued)



### Turn the pump off

Press and hold **ON/OFF** until 3 sets of dots appear and then disappear from the display and the display turns off.

Check that the display is off.



### Clamp the cassette tube



### Disconnect the tubing

Twist the cassette tube to disconnect it from the straight green connector.

Replace the red cap on the cassette tube.



**Be careful not to twist the stomach tube while changing cassettes**

## Changing your cassette (continued)



7

### Remove the Duopa cassette from the pump

Hold the pump and Duopa cassette upright against a flat surface.  
Use a quarter to twist the latch clockwise until the latch pops out.  
Remove the Duopa cassette from the pump.



8

### Remove the cassette clip on the new Duopa cassette

Remove the cassette tube from its secured slot in the clip.  
Pull the clip from the cassette to slide it off the cassette top.



9

### Attach the new Duopa cassette to the pump

Hold the pump so that the latch faces up.  
Hold the Duopa cassette so that the tube points down.  
Insert the Duopa cassette hooks into the hinge pins at the base of the pump.



## Changing your cassette (continued)



10

### Latch the new Duopa cassette into the pump

Hold the pump and Duopa cassette upright against a flat surface. Press down on the pump until the cassette fits tightly against the pump. Use a quarter to twist the latch counterclockwise until the latch lines up straight with the arrow.



**A detached or incorrectly attached cassette could cause a problem and prevent Duopa flow.**

---



11

### Remove the red cap on the end of the cassette tube

Save the red cap to use when discarding the cassette.



**Do not connect the red cap to the stomach tube, as it will block Duopa flow.**

---



12

### Connect the stomach tube to the cassette tube

While holding the stomach tube steady, twist off the white cap on the end of the straight green connector.

Connect the cassette tube to the end of the straight green connector.



**Be careful not to twist the stomach tube.**

---



**Make sure not to connect your cassette tube to the angled connector, which may be blue, white or violet.**

---

## Changing your cassette (continued)



13

### Turn the pump on

Press and hold **ON/OFF** until the display turns on.

Wait approximately **30 seconds** for the pump to review settings.

Check for **STOPPED** on the display.



#### **Pump Status: STOPPED**

The pump is now on but not delivering Duopa.

---



14

### Inspect the tubing for kinks or closed clamps

Straighten kinks or open clamp (if needed).

## Changing your cassette (continued)



15

### Start the pump

Press and hold **STOP/START** until 3 dashes appear and then disappear from the display.

Wait approximately **15 seconds** for the pump to start running.

Check for **RUN** on the display.



#### **Pump Status: RUN**

The pump is now running.

---



16

### Put the pump into the carrying case

Make sure the pump is in the correct position.

 The pump status lets you know what your pump is doing based on the message it displays.

**Duopa**  
carbidopa/levodopa  
enteral suspension  
4.63 mg/20 mg per mL

Please see [Full Prescribing Information](#) or visit [www.duopa.com](http://www.duopa.com).  
Please see Indication and [Important Safety Information](#) on pages 4 and 5.

**DUO**  
CONNECT  
*complete*

# Tips for use

## Easy ways to carry your pump

Covering your pump can protect it from extreme heat and cold, especially when you're outside. Your pump comes with a carrying case to help keep it safe, but there are also several other case styles available. Refer to the specific Instructions for Use that came with your carrying case or go to [www.duopa.com/duopa-your-day](http://www.duopa.com/duopa-your-day).



Not actual patients.

**Lightweight Vest**

**Hip Pack**

**Fitted Belt**

**Duopa**  
carbidopa/levodopa  
enteral suspension  
4.63 mg/20 mg per mL

Please see [Full Prescribing Information](#) or visit [www.duopa.com](http://www.duopa.com).  
Please see Indication and [Important Safety Information](#) on pages 4 and 5.

**DUO**  
CONNECT  
*complete*

# Tips for use (continued)

---



**Fitted Vest**



**Chest Pack**



**Cross-body Pack**





## Making Duopa part of your day

### Duopa and bathing

Once the stoma is fully healed, you can bathe and shower as usual. Never let the pump get wet. Always disconnect the pump before you get in the water. Reconnect and restart it when you're done.

- **If you stop Duopa for less than 2 hours**, you do not need to take carbidopa/levodopa pills, but your healthcare provider may tell you to take an extra dose of Duopa.
- **If you need to stop Duopa for more than 2 hours** during the day, please contact your healthcare provider and take your carbidopa/levodopa pills as prescribed.

### Duopa and additional medication

Your healthcare provider will most likely prescribe carbidopa/levodopa pills along with Duopa. Be sure to always have this prescription filled and have the pills available in case:

- Your pump stops working or needs to be disconnected
- You need to pause your treatment for an extended time
- You need help controlling symptoms at night, after you disconnect your pump

**Always follow your healthcare provider's instructions.**

### Duopa and your diet

Foods high in protein may change how Duopa works. Talk to your healthcare provider about your diet and any changes you may want to make.

## Traveling with Duopa

Before you travel, talk to your healthcare provider about your plans, and ask about items you need to pack. Bring your carbidopa/levodopa pills to take at night or if the pump stops working.

### Away for a longer stay

If you're traveling for an extended time within the US, call your specialty pharmacy to ask about having more cassettes and batteries shipped to your destination. Duopa cannot be shipped outside of the US.

### Carrying your cassettes



When you travel, carry your refrigerated Duopa cassettes in the cooler provided by AbbVie. Freezer packs must be frozen or solid when you go through security. The cool packs will keep the cassettes between 36°F and 46°F (2°C and 8°C) for up to 12 hours. If your cassettes don't stay within that range, call your specialty pharmacy.

Please reference the "Cassette Travel Bag Instructions" found in the cooler provided by AbbVie.

### Flying smart

Before you fly:

- Call the airline to alert them that you use a medical device
- Ask your healthcare provider about flying with Duopa
- Give yourself plenty of time to get through security

### Managing security questions

Expect security personnel to have questions about Duopa equipment. Call the Transportation Security Administration (TSA) at 855-787-2227 at least 72 hours before your flight to tell them that you use a medical pump with metal parts. They will help you prepare for the security checkpoint. Also, bring the TSA card provided on the back of this guide.

### X-ray exposure

The amount of incidental metal you wear (jewelry, watches, coins, etc) when added to the amount of metal in a CADD® pump may be sufficient to set off a metal detector. However, a metal detector should not adversely affect the pump, and it can be put through the X-ray machine.

  
Duopa  
carbidopa/levodopa  
enteral suspension  
4.63 mg/20 mg per mL

Please see [Full Prescribing Information](#) or visit [www.duopa.com](http://www.duopa.com).  
Please see Indication and [Important Safety Information](#) on pages 4 and 5.

  
DUO  
CONNECT  
complete

## Traveling with Duopa (continued)

**Notification Card**

I have the following health condition, disability, or medical device that may affect my screening:

(optional)

I understand that presenting this card does not exempt me from screening.

### TSA notification card

You can use this TSA Notification Card at the airport. Keep in mind that using the Notification Card or medical documentation won't keep you from being screened.

**Medical Alert Card**

PEG Tube List Number: \_\_\_\_\_

PEG Tube Lot Number: \_\_\_\_\_

J Tube List Number: \_\_\_\_\_

J Tube Lot Number: \_\_\_\_\_

Supplemental MRI labeling is available at [rxabbvie.com](http://rxabbvie.com)

### Medical alert card

Keep this card in your wallet or pump carrying case, so you can reach it quickly in case of an emergency.

To add the lot number to your card, bring it to your procedure so your healthcare team can help.

If you need a copy of these cards, be sure to reach out to your Nurse Ambassador. They can ensure copies are mailed directly to you, at no additional cost.

**Duopa**  
carbidopa/levodopa  
enteral suspension  
4.63 mg/20 mg per mL

Please see [Full Prescribing Information](#) or visit [www.duopa.com](http://www.duopa.com).  
Please see Indication and [Important Safety Information](#) on pages 4 and 5.

**DUO**  
CONNECT  
*complete*

# Frequently asked questions

---

## Cassette FAQs

### How much Duopa will I need each day?

Your healthcare provider will determine how much Duopa you'll need each day. Never reuse cassettes, even if some medicine is left inside.

### Can I reuse a cassette?

No. Each Duopa cassette is for single use only.

### Can I use a cassette for longer than 16 hours?

Don't use a cassette for longer than 16 hours, even if some medicine is left. Follow the specialty pharmacy's instructions to dispose of the cassette at the end of each day.

### How should I store the Duopa cassettes?

Always store the cassettes in a refrigerator with the temperature set between 36°F and 46°F (2°C and 8°C). Don't freeze the cassettes.



- Always check the “use by” date on the cassette before using
- The box containing the cassettes should always be kept closed, because Duopa is sensitive to light
- Always keep the cassettes out of the reach of children

---

### What should I do if the power to my refrigerator goes out?

Call your specialty pharmacy immediately for instructions regarding emergency cassette care. Your healthcare provider will have prescribed carbidopa/levodopa pills to use if you have to interrupt your Duopa infusion. Take these pills as instructed.

## Pump FAQs

### Is the pump heavy?

The pump with 2 AA batteries and empty medication cassette weighs slightly less than a pound. If you feel pressure from the shoulder strap, try wearing the pump in the carrying case over a cotton undershirt or top.

### How often will I need to change the pump batteries?

Once a week is recommended. You may want to change the batteries at the same time each week to help you remember. You'll receive new AA batteries with each Duopa cassette shipment. It's also a good idea to keep plenty of spare batteries on hand.

### Can I use rechargeable batteries?

No. Don't use rechargeable batteries or carbon zinc (heavy-duty) batteries. They don't provide enough power to operate the pump properly. Use 2 new AA alkaline batteries, such as Duracell® CopperTop or Energizer® Max.

### What should I do if my pump stops working?

Check that the pump is on or if it needs new batteries. If your pump stops working, call your healthcare provider or your Nurse Ambassador immediately.

### What should I do if I stop my Duopa infusion for more than 2 hours?

If you stop your Duopa infusion for more than 2 hours during your 16-hour dosing time for any reason, call your healthcare provider and take carbidopa/levodopa pills as prescribed until you are able to restart your Duopa infusion.

### What should I do if a pump alarm sounds?

The pump has a number of different alarm signals to let you know what to do. See the "Alarms and Messages" section starting on [pages 48-49](#) for more information. You can also call your Nurse Ambassador.

## Pump FAQs (continued)

### Do I need to disconnect the pump to shower or bathe?

Yes. Your pump should not get wet. You'll need to detach the pump before you shower, bathe or swim. Reattach and restart the pump afterwards.

If you stop Duopa for less than 2 hours, you do not need to take carbidopa/levodopa pills, but your healthcare provider may tell you to take an extra dose of Duopa.

Please refer to [page 9](#) for additional guidance on bathing and showering with Duopa.

### Do I need to disconnect the pump for medical tests?

The pump may need to be removed prior to certain medical tests. Be sure to talk to your healthcare provider about your Duopa pump before you have any medical tests.

### Is the pump sensitive to temperature?

Yes. Exposure to extreme temperatures can damage your pump, which can adversely affect your Duopa treatment. Do not operate the pump below 36°F (2°C) or above 104°F (40°C). Protect your pump from exposure to cold temperatures. Wear the pump in the carrying case close to your body under warm clothing when you are outside in cold weather. Avoid overheating the pump and Duopa cassette. Do not sterilize your pump or keep it in humidity levels below 20% or above 90% relative humidity.

### Should I store the pump at a certain temperature?

Do not store the pump at temperatures below -4°F (-20°C) or above 140°F (60°C) or with the Duopa cassette attached.

### What should I do if I drop or hit my pump?

If the pump is dropped or hit, the battery door or tabs may break. Do not use the pump if the battery door or tabs are damaged because the batteries will not be correctly secured. This may **cause loss of power, and Duopa will not be delivered.**

### What should I do if my pump is damaged or not functioning?

Do not use a pump that is damaged or is not functioning correctly. If the pump is damaged, not working, or not working correctly, call your healthcare provider or your Nurse Ambassador immediately—don't try to repair it. You may have to take carbidopa/levodopa pills, as directed by your healthcare provider, until it is fixed or replaced.



## Pump FAQs (continued)

### How can I keep my pump well maintained?

- Your specialty pharmacy will coordinate yearly maintenance with you to make sure your pump is working correctly
- Don't store the pump with a used cassette attached or (for prolonged periods of time) with the batteries installed. Battery leakage could damage the pump
- When you're not using the pump, connect the protective cassette to the pump and store it in the carrying case provided
- If you have any issues with your pump, please call your healthcare provider or your Nurse Ambassador

### What should I do if I have other questions about my pump?

If you have questions or need pump support, call your healthcare provider or Nurse Ambassador.

## Tubing FAQs

### How often does the tubing need to be changed?

Your healthcare provider will let you know if your tubing needs to be changed. Removal should only be performed by a qualified healthcare provider. Call your healthcare provider right away if your tubing is damaged.

### What do I do if the tube is pulled out?

Don't try to replace the tube. Call your healthcare provider immediately. Follow your healthcare provider's instructions for taking other medication until the tube is replaced.

### What if the tube gets blocked?

If blockage occurs, the pump will sound an alarm and display a "high pressure" alert. If this happens, try the following:

- See if the tubing is kinked or a clamp is closed
- Unkink the tubing or open the clamp, and the pump should start again
- Call your healthcare provider if the alarm continues
- If you notice your medication isn't being delivered properly, call your healthcare provider right away

### What if the tube is disconnected for longer than 2 hours?

For interruptions to your Duopa medication lasting longer than 2 hours, contact your healthcare provider and take oral carbidopa/levodopa until you're able to resume Duopa.

### Should I flush the tubing if I discontinue Duopa for longer than 2 hours during the daily 16 hours of Duopa infusion?

Call your healthcare provider for instructions on tube care and flushing after 2 hours or more of disuse during the daily 16 hours of Duopa infusion.

## Alarms and messages

What you see and hear	What it means	What to do
<p><b>Display message:</b> Error</p> <p> <i>Two-Tone Alarm</i></p>	<p>An <b>error with the pump</b> has occurred.</p>	<p>Contact your healthcare provider.</p>
<p><b>Display message:</b> High Pressure</p> <p> <i>Two-Tone Alarm</i></p>	<p>There is <b>pressure backed up in the tubing</b>.</p>	<p>Check tubing for clamps, kinks, or blockages. Make sure the red cap has been removed from the Duopa cassette tube. Flush connectors if necessary.</p> <p>If it is not possible to flush the tubes, contact your healthcare provider, as your tube may be blocked.</p>
<p><b>Display message:</b> LowBat</p> <p> <i>3 Two-Tone Beeps Every 5 Minutes</i></p>	<p><b>The pump batteries are low.</b></p>	<p>Change the batteries right away.</p>
<p><b>Display message:</b> Upstream Occlusion</p> <p> <i>Two-Tone Alarm</i></p>	<p>If your healthcare provider has the Upstream Occlusion Sensor set to <b>ON</b> and <b>a blockage in the Duopa cassette is detected</b>, this alarm will sound.</p>	<p>Detach the Duopa cassette. Check if it is empty. If not empty, reattach the Duopa cassette. Restart the pump to continue delivery.</p> <p>If empty, replace the Duopa cassette with a fresh one.</p> <p>Contact your healthcare provider if the alarm continues.</p>
<p><b>Display message:</b> No message on display</p> <p> <i>Two-Tone Alarm</i></p>	<p><b>Batteries were removed</b> within approximately 15 seconds after stopping the pump.</p>	<p>Install new batteries to silence the alarm. Otherwise, the alarm will stop within a short period of time.</p>



Please read the display before pressing **NEXT** to silence the alarm.

What you see and hear	What it means	What to do
<p><b>Display message:</b> Display shows current pump status</p> <p> <b>2 Beeps (Long-Short)</b></p>	<p>The Duopa cassette is not lined up with the pump, or <b>Duopa is not flowing</b> from the Duopa cassette to the pumping mechanism.</p> <p>Very cold or extremely thick Duopa may cause this alarm as well.</p>	<p>Press <b>NEXT</b> to silence the alarm. The pump will continue to run. Make sure the Duopa cassette is correctly lined up with the pump and Duopa is flowing.</p> <p>Remember when taking fresh Duopa cassettes out of the refrigerator, let them sit for <b>20</b> minutes before attaching to your pump.</p>
<p><b>Display message:</b> Battery Depleted</p> <p> <b>Two-Tone Alarm</b></p>	<p><b>Batteries are dead.</b></p>	<p>Install new batteries.</p> <p>To continue delivery, restart the pump when completed.</p>
<p><b>Display message:</b> KEY PRESSED, PLEASE RELEASE</p> <p> <b>Two-Tone Alarm</b></p>	<p><b>Key is being held down.</b></p>	<p>Stop pressing key.</p> <p>If the alarm persists, close the cassette tube clamp and remove the pump from use. Contact your healthcare provider.</p>
<p><b>Display message:</b> No Disposable, Clamp Tubing</p> <p> <b>Two-Tone Alarm</b></p>	<p><b>The pump is not sensing proper cassette attachment.</b></p> <p><b>Disposable</b> refers to the Duopa cassette. <b>No Disposable</b> means the Duopa cassette was removed.</p>	<p>Clamp the cassette tube and disconnect it from your stomach tube. A Duopa cassette must be correctly attached in order for the pump to run. Press <b>NEXT</b> to silence the alarm.</p>
<p><b>Display message:</b> No Disposable, Pump won't run</p> <p> <b>Two-Tone Alarm</b></p>	<p>You have <b>tried to start the pump without a disposable Duopa cassette attached.</b></p>	<p>Press <b>NEXT</b> to silence the alarm. A Duopa cassette must be correctly attached for the pump to run.</p>
<p><b>Display message:</b> Service Due, See manual</p> <p> <b>Two-Tone Alarm</b></p>	<p>The pump is <b>scheduled for service.</b></p>	<p>Press <b>NEXT</b> to silence the alarm. The pump is still working, but contact your healthcare provider for instructions.</p>





**Duopa**   
carbidopa/levodopa  
enteral suspension  
4.63 mg/20 mg per mL

Not an  
actual patient.



**Our Nurse Ambassadors\* are here to support you through every step of your treatment.**

**Call 1-844-386-4968** Monday–Friday, 8:00 AM to 8:00 PM ET.

After-hours and holiday calls will be returned within 1 hour. For urgent medical emergencies, call your healthcare provider or 911.

Please see [Full Prescribing Information](#) or visit [www.duopa.com](http://www.duopa.com).

Please see Indication and [Important Safety Information](#) on pages 4 and 5.

**DUO**   
**CONNECT**  
*complete*

\*Nurse Ambassadors are provided by AbbVie and do not work under the direction of your healthcare professional (HCP) or give medical advice. They are trained to direct patients to their HCP for treatment-related advice, including further referrals.

©2022 AbbVie Inc. North Chicago, IL 60064  
US-DUOP-220146 August 2022

abbvie